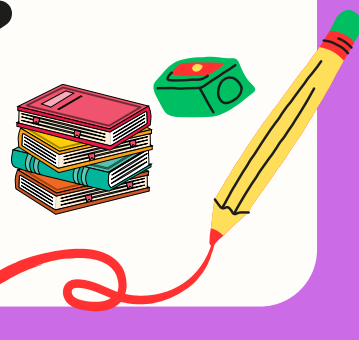


Eskdale School

June
2025



Upcoming Events

Jammies for June - 13 June

Coastal Cluster Netball - 18 June

Matariki Day - 20 June

(School Closed)

Tough Kids - 26 June

(held at Clifton Station)

Last Day Term 2 - 27 June

First Day Term 3 - 14 July 2025

Learning Conferences - 23 July

(School Finishes normal time of 2.45pm)

Learning Conferences - 24 July

(School Finishes at 12.30pm)

buses will run at the earlier time)

Crab Farm AIMS Games Jingo

Fundraiser - 26 July

(held at Crab Farm Winery)

Coastal Cluster Soccer

(held at Petane Domain)

Sports Team Photos - 30 July

Class, Individual & Sibling Photos

- 8 August

Cross Country - 12 August

Welcome to the June Newsletter

Welcome to the June newsletter and the start of winter. It's hard to believe we only have three weeks left in what has been a very successful Term 2 both inside and outside the classroom.

PTA Testing Results: As a school we carry out the PAT tests every year. These are standardised and norm referenced tests, so they give the school an excellent insight into how our children are tracking in the core areas of learning, especially when compared to the rest of the country. It also gives us valuable information about the effectiveness of our learning programmes in these core areas. The results below are the best we have ever achieved as a school and every cohort has improved on their results from the previous year. We are proud of these results and any school in the country would love to have results like these.

Key: Number in Brackets is the Standardised / Norm referenced result, and the number in bold is the 2025 Eskdale result.

Year Level	Below Average (St. 1,2,3)	Average (St. 4,5,6)	Above Average (St. 7,8,9)
4	6% (23%)	55% (54%)	39% (23%)
5	9% (23%)	44% (54%)	47% (23%)
6	3% (23%)	64% (54%)	33% (23%)
7	6% (23%)	41% (54%)	53% (23%)
8	0% (23%)	49% (54%)	51% (23%)

PAT Math:

PAT Reading Comprehension:

Year Level	Below Average (St. 1,2,3)	Average (St. 4,5,6)	Above Average (St. 7,8,9)
4	6% (23%)	65% (54%)	29% (23%)
5	9% (23%)	62% (54%)	29% (23%)
6	5% (23%)	66% (54%)	29% (23%)
7	18% (23%)	48% (54%)	33% (23%)
8	6% (23%)	60% (54%)	34% (23%)



Ripper Rugby: Over the past few weeks there has been two ripper rugby tournaments, and our children have thoroughly enjoyed the opportunity to take part. It's a sport that is enjoyed equally by the boys and the girls and their results on both days indicate we have some talented students across the school. Well done to all who took part!



Term 2 Reporting: The Seesaw reporting areas coming up are outlined below:

Year Level Phase	<u>Week 7</u>	<u>Week 9</u>
Phase 1- NE- Y3	Reading	Addition & Subtraction
Phase 2- Y4- Y6	Writing	Measurement
Phase 3- Y7/8	Writing	Financial Math

Kapa Haka: At assembly last week we had our Māori Performing Arts share an awesome performance with the school. Their waiata sounded lovely and the haka was powerful. We look forward to seeing them perform again soon.



Term 3: Next term I have been fortunate enough to have been awarded a sabbatical, so I won't be about next term. I will be back on deck again in Term 4. Tineke Hill will be filling in for me while I am away.

Next term promises to be a busy one with the Parent/Teacher learning conferences coming up in Week 2, the cross country in Week 3 and the school production in Week 7. Please keep an eye on the calendar to stay abreast of all these activities.

School Fees/Donations: We have been able to keep our school fees/donations the same again for the fourth year running.

Our 2025 school fees/donations are set at \$40.00 per student per term. These form an integral part of ensuring we can provide all the resources we want to for our students. The funds provided by the Ministry of Education do not cover all of the resources we believe are essential for every child to experience success.

Over the past 12 months we have used the school donations for increased teachers in classes (reducing teacher to student ratio), increased literacy support time and purchased additional learning resources.

2025 Recommended School Fee/Donation: \$40.00 per term; or

- Individual Child \$160.00 per year discounted if paid in Term 1 to \$140.00.
- Two Children \$320.00 per year discounted if paid in Term 1 to \$280.00.
- Three or more children \$480.00 per year discounted if paid in Term 1 to \$420.00.

Thank you for your support with this. Tristan

Eskdale School Absentees

A reminder that if your child is absent from school to contact the school office prior to 9.00am.

This can be done in a number of different ways:

Email: absence@eskdale.school.nz

Text: 021 114 5845

Phone: 06 836 6845 (option 1)

App: Skool Loop

Eskdale School Sports

All sports notices and information regarding upcoming sports is displayed on our school website.

Any other Sport queries (eg Coastal Cluster) please contact
Kim Wallace:

kimw@eskdale.school.nz

Any Team Sport (out of school time) queries please contact
Maree Baird:

sport@eskdale.school.nz

ESKDALE PRIMARY SCHOOL

Term 2 School lunch deliveries

TUESDAY – SUSHI orders close 8:30am

THURSDAY – PITA PIT orders close 9am

FRIDAY – PIZZA orders close 9am

Order through lunchonline
www.lunchonline.co.nz



To open a Lunchonline account - register an account at www.lunchonline.co.nz

1. Login/Place an Order
2. Create an account
3. Add member/s include name, school and classroom number
4. Under Lunch Orders select student name – Start order and place your order
5. A pop up will confirm 'your order has been successful' or check 'upcoming orders'
6. A confirmation email will be sent to you (if you haven't unchecked the email box)
7. Any queries please call us on 0800 LOL LOL (0800565565)